



# SYNCHRO-LXS

*Software by Logopak*

**Batch Labelling  
Control System**

**Product Description**

<b>Table of Contents</b>	<b>Page</b>
<b>1 Introduction</b> .....	<b>3</b>
<b>2 Standard Configuration</b> .....	<b>3</b>
<b>3 Synchro UserInterface</b> .....	<b>4</b>
3.1 Menu – Common structure .....	5
3.2 Tree – Overview and fast access .....	5
3.3 Device Window – Detailed information and control .....	5
3.4 Multi Language Support – Change the user language on the fly .....	5
3.5 Security Levels – Functionality available as needed .....	5
3.6 Touch Screen Support – Working in demanding environments.....	5
<b>4 Customisation</b> .....	<b>5</b>
4.1 Standard Configuration .....	6
4.2 Flexibility .....	6
4.3 Scalability.....	6
4.4 Self-Contained Installation or System Integration.....	6
4.5 Relying on Standards, Supporting Standards.....	6
<b>5 Implementation Platform</b> .....	<b>7</b>
<b>6 Support</b> .....	<b>7</b>



Jan 2008

## 1 Introduction

**Synchro-LXS** is a software package for simple but secure batch labelling.

It is an example of the LogoSoft Standard Software Solutions by Logopak for a wide variety of labelling applications.

Synchro-LXS supports the following standard functionality:

- Local data base for managing article data
- Import of article data
- Storage of production data (shipping unit numbers and article data)
- Export of stored production data
- Management of multiple label layouts
- Calculation of best before dates based on article information
- Serial communication via Ethernet
- Complete integration of LOGOPAK labellers

Customer specific enhancements are available upon request.

The software supports the operation systems Windows 95/98/NT4.0/2000 and XP as well as LINUX.

## 2 Standard Configuration

**Synchro-LXS** supports two labelling stations, one automatic LOGOPAK labeller and one manual LOGOPAK VLP labeller.

**Synchro-LXS** resides on a dedicated PC with a relational database. The database holds article or production order data that can either be imported from the customers host or maintained locally.

**Synchro-LXS** allows the operator to select article / production order data from the local database, input additional data manually and generates the label data. Label format and layout can be configured according to the requirements of the individual installation.

Labellers, scanners, and, if required, the PLC can be connected to the PC via RS232 or TCP/IP sockets. ComServers allow for serial communication via the Ethernet. This eliminates length restrictions known from RS232. Furthermore, the Ethernet infrastructure generally found on site alleviates the need for dedicated serial cabling.

Jan 2008

### 3 Synchro-LXS User Interface

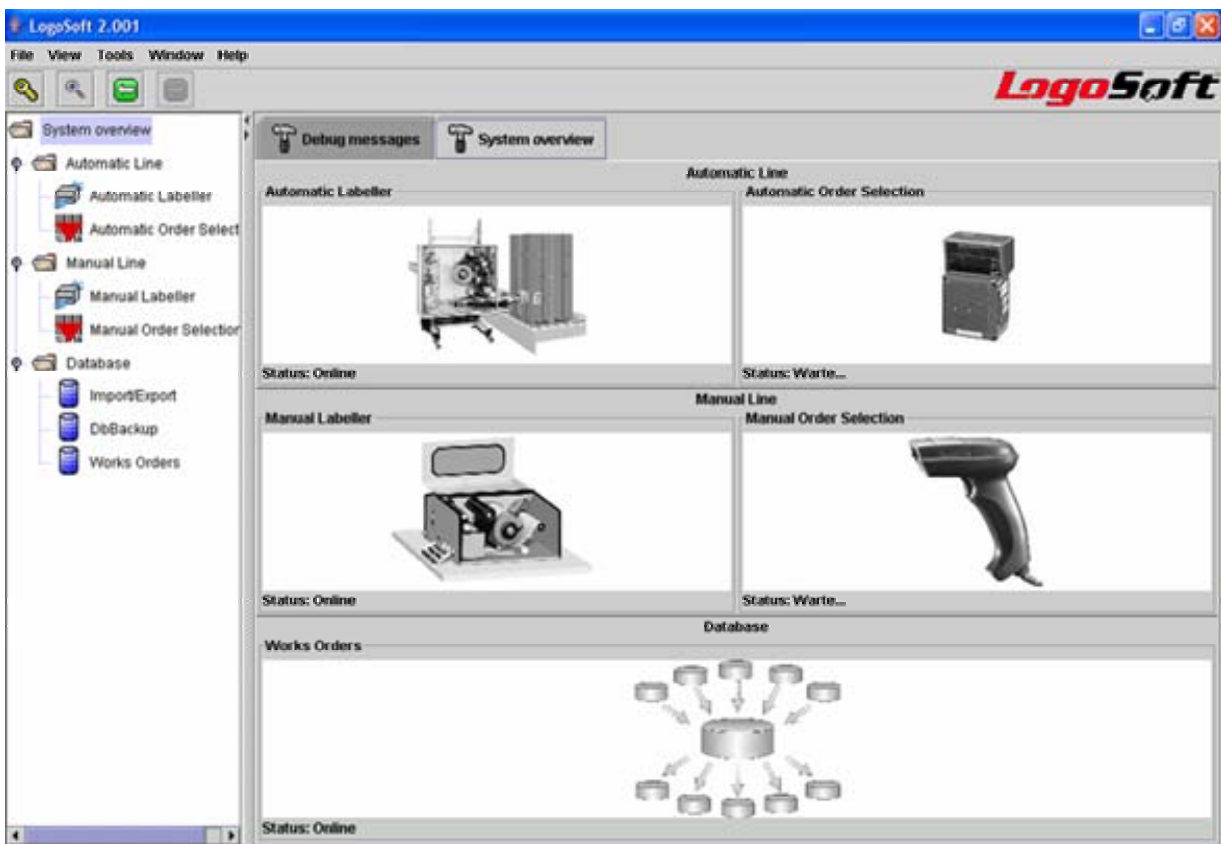
**Synchro-LXS**, as all other products of the LogoSoft software suite, feature a user interface that focuses on presenting the desired labelling functionality to the user in a clear, consistent manner. Picture 1 displays a **Synchro-LXS** (example) window with its main components.

#### 3.1 Menu – Common structure

The menu structure follows modern standard applications. This reduces the training effort for the personnel on site.

#### 3.2 Tree – Overview and fast access

The device tree on the left side of the windows indicates which device the users focuses on at any given time. It can also be used to access the different parts of the system. Last but not least it constantly shows the system state in a nutshell.



#### 3.3 Device Window – Detailed information and control

The right part of the **Synchro-LXS** window shows the current user focus. Here the user can supervise the labelling process, maintain article data or trace interface runs. The constantly visible device tree allows him to still maintain the overview and react where needed.

Jan 2008

### **3.4 Multi Language Support – Change the user language on the fly**

**Synchro-LXS** supports multiple languages of the user interface. Menu texts, buttons and messages follow the current user language set by a menu command. In multinational organizations, this allows local staff to work in their own language while central support staff can rely on a known environment.

Initially the languages English and German are supported. The support of additional languages is planned. Please refer with your representative for the currently supported languages. Additional languages can be made available upon request.

### **3.5 Security Levels – Functionality available as needed**

**Synchro-LXS** supports a number of user profiles and provides the functionality required to fulfil each respective profile. The standard tasks for the operating personnel are supported on system start-up.

Other tasks like article data maintenance and system configuration are guarded by a set of password levels. These levels match the levels on the LOGOPAK labellers, reducing the training effort.

### **3.6 Touch Screen Support – Working in demanding environments**

Depending on your working environment, a touch screen may be superior to a mouse, but it requires larger sensitive areas. The **Synchro-LXS** windows are designed to support the touch screens as input device.

## **4 Customisation**

**Synchro-LXS** manages to satisfy a number of apparently conflicting needs of the customer like standardisation vs. flexibility, and scalability or self-contained installation for high availability vs. close system integration for efficient business procedures. Please have a closer look at these aspects.

### **4.1 Standard Configuration**

**Synchro-LXS** comes with a standard configuration, allowing you to get started with minimum time spent on planning and specification. The standard configuration supports a typical labelling scenario.

**Synchro-LXS** may be integrated into your systems infrastructure by interchanging standard interface files with your host. Only communication parameters for scanners and labellers need to be set.

### **4.2 Flexibility**

Alternatively, Logopak Staff tailor the standard application to your needs in order to seamlessly integrate it into your environment.

Typical aspects of customisation are the interface format for data exchange with the host system, fieldnames and field access for the manual data maintenance, label layouts, customer specific device names (e.g. "Hall East, or "Non-Food").

Jan 2008

If required, bespoke modifications to the standard could implement a control flow matching the procedures implemented at your site.

### **4.3 Scalability**

Large installations could be configured via a number of standard **Synchro-LXS** installations connecting to a central **Synchro-LXS** database server.

Bespoke modifications to the standard could even extend the number of devices controlled by one PC.

### **4.4 Self-Contained Installation or System Integration**

The local database ensures that **Synchro-LXS** can continue to operate independently of a customer host system. Article data may be entered locally if desired.

Generally, an integration to the customers IT systems would be desired. This can be achieved via up- and download interfaces. **Synchro-LXS** supports a variety of flat-file interfaces. Short interface cycle interval allow close to real-time integration while preserving the ability to operate off-line in case of disturbed communication.

Upload data may originate from the labeller as well as from the PC. Hence the rich set of labelling functions implemented in the LOGOPAK labellers are available to the **Synchro-LXS** application.

Alternative mean of data exchange are feasible, should the flat file interface not satisfy your requirement. Please contact us with your individual requirements.

### **4.5 Relying on Standards, Supporting Standards**

**Synchro-LXS** supports and relies on industry standards in order to ease the integration into your business environment.

It runs on standard office PC equipped with the Microsoft Windows operating systems 95, 98, NT 4.0, 2000 and XP as well as LINUX.

**Synchro-LXS** supports a variety JDBC compatible relational databases. LogoSoft installations connect to RDMBSs like Sybase SQL Studio, HSQLDB, Oracle, MS-SQL, My-SQL, and Gupta.

External devices may be attached via serial connection (RS232). W&T ComServers allow to perform the serial communication via the Ethernet.

Interface files are exchanged via operating system means or via an FTP server installed on the **Synchro-LXS** -PC. Direct access to remote databases are available on request.

## 5 Implementation Platform

**Synchro-LXS** runs on any current industry standard PC with:

- Intel oder Intel compatible CPU 2 GHz or better, 3 Ghz recommended (accoring to the QuantiSpeed-Rating)
- 20 GB hard disk or better
- 512 MB RAM or better, Windows Vista 1 GB or better
- PCI VGA adapter or better
- PS/2 mouse, USB mouse or touch screen
- PS/2 or USB keyboard
- Ethernet adapter 10/100 M bit
- Windows 2000 / XP / Vista or LINUX.
- Screen resolution at least 1024 by 768 pixels and 256 colours
- Support for 220V/ 50Hz in case of software installation prior to shipment
- 32x CD ROM drive or better recommended

## 6 Support

Logopak offers remote support for the **Synchro-LXS** installation via ISDN or analogue dial in. ISDN dial in is recommended.

The dial-in may access the customer's central RAS server or router as well as a dedicated ISDN or analogue modem.

The dial-in to a central server or router is recommended.